

*Journey through the Holy Land!*



The Holy Land Tour is not like anything you have ever experienced. Walking through a life-sized replica of the Eastern Gate in Jerusalem into an authentic Marketplace, you will feel as if you are in the actual Holy Land. Talk with Biblical craftspeople and characters and even witness Jesus walk on water. Tours are from 12:00pm to 4:00pm on days of Play performances.

On days the Passion Play is not performed, you can even get a special guided tour of the Holy Land all year long! Call or visit us online for more information.

Our life-sized replica of the Tabernacle is quite a sight to see! It is a great part of the Holy Land Tour, but get a ticket for the In-Depth Tabernacle Teaching at 10:00am on days the Play is performed.



Do not miss experiencing Biblical life with your own eyes with cisterns, sheep pens, wells, buildings, and guard towers!



**Motorcoaches & Buses are Always Welcome!**



Go to [GreatPassionPlay.org/special-events.html](http://GreatPassionPlay.org/special-events.html) for information on special events such as the Easter Sunrise Service at the Christ of the Ozarks and more!

**800-882-PLAY (7529)**

**Places to Stay**

- 5 Ojo Inn Bed & Breakfast: 479-253-6734
- Beaver Lake Cottages: 800-421-8439
- Best Western Eureka Inn: 800-221-3344
- Best Western Inn of the Ozarks: 800-809-6752
- Cinnamon Valley: 479-244-5942
- Country Mountain Inn: 800-626-7120
- EnchantedForestResort.com: 800-293-9586
- Express Inn: 479-253-6665
- Keller's Country Dorm for Groups: 479-363-4789
- Ozarka Lodge: 866-599-6674
- Regency Inn: 479-253-5959
- Statue Road Inn: 479-253-9999
- Wanderlust RV Park: 479-253-7385

*"Only 48 Scenic Miles South of Branson"*

Join us on  
Facebook  
Twitter  
Instagram  
Pinterest  
and YouTube!

**Places to Eat**

- Myrtie Mae's Restaurant: 800-552-3785
- McDonald's: 479-253-6106
- Route 62 Diner: 479-253-8776

**Things to Do**

- Cosmic Cavern: 870-749-2298
- Eureka Springs Tram Tours: 479-253-6852
- Opera in the Ozarks: 479-253-8595
- [www.fb.com/OzarkMountainMusicTheatre](http://www.fb.com/OzarkMountainMusicTheatre)
- Starkey Marina & Boat Rentals: 479-253-8194
- TalkingRocksCavern.com: 800-600-CAVE (2283)
- The Butterfly Palace: 417-332-2231
- Turpentine Creek Wildlife Refuge: 479-253-5841
- [OzarkMountainVeterans.com](http://OzarkMountainVeterans.com)
- The Promise in Glen Rose, Texas: 254-897-3926



Visit our online gift store for Passion Play DVDs, merchandise and memorabilia.



**Experience the Light!**

Celebrate Christmas in Eureka Springs!  
Drive-Through Christmas Tree Forest  
Last Weekend in November through January 1

The Great Passion Play  
935 Passion Play Road  
Eureka Springs, AR 72632  
GreatPassionPlay.org  
800-882-7529

**2016 Play Schedule**

Passion Play at 8:30pm  
Passion Play at 7:30pm  
Sunday Passion Play at 8:30pm

**May '16**

Su	M	Tu	W	Th	F	Sa
1	2	3	4	5	6	7
8	9	10	11	12	13	14
15	16	17	18	19	20	21
22	23	24	25	26	27	28
29	30	31				

**June '16**

Su	M	Tu	W	Th	F	Sa
			1	2	3	4
5	6	7	8	9	10	11
12	13	14	15	16	17	18
19	20	21	22	23	24	25
26	27	28	29	30		

**July '16**

Su	M	Tu	W	Th	F	Sa
					1	2
3	4	5	6	7	8	9
10	11	12	13	14	15	16
17	18	19	20	21	22	23
24	25	26	27	28	29	30

**August '16**

Su	M	Tu	W	Th	F	Sa
	1	2	3	4	5	6
7	8	9	10	11	12	13
14	15	16	17	18	19	20
21	22	23	24	25	26	27
28	29	30	31			

**September '16**

Su	M	Tu	W	Th	F	Sa
				1	2	3
4	5	6	7	8	9	10
11	12	13	14	15	16	17
18	19	20	21	22	23	24
25	26	27	28	29	30	

**October '16**

Su	M	Tu	W	Th	F	Sa
						1
2	3	4	5	6	7	8
9	10	11	12	13	14	15
16	17	18	19	20	21	22
23	24	25	26	27	28	29



**800-882-PLAY (7529)**

**"AMERICA'S LARGEST ATTENDED OUTDOOR DRAMA"**

**THE GREATEST STORY EVER TOLD IS OF THE MAN WHO CHANGED THE WORLD FOREVER.**



Produced in partnership with  
[TheGospelStation.com](http://TheGospelStation.com)



**EUREKA SPRINGS, AR**

*Make your reservation now!*

Play tickets and Holy Land tickets are available for adults, youth ages 12-16, children ages 4-11, and children under 4 are always free. Visit [GreatPassionPlay.org](http://GreatPassionPlay.org) or call for ticket prices. Special group rates (over 15 people) are available!

**The Great Passion Play is a nonprofit 501(c)(3) organization. All donations are tax-deductible.**

Admission to the Christ of the Ozarks, Bible Museum, and Sacred Arts Museum is free with donations gratefully accepted. The Christ of the Ozarks is open year-round. The gift shop and Bible Museum is open every day but Sunday. Tickets to the Play and Holy Land can be used over 2 days.

*Buffet Dinner in the Great Hall*

Our delicious buffet is served before the Play from 4:30pm-7:30pm (4:00pm-7:00pm after Labor Day). The buffet includes a full salad bar, vegetable and meat selections, bread, dessert bar, and drinks.

*Backstage Tours*

Backstage tour tickets are available at 3:00pm on days the Play is performed and other days by special appointment. An actual actor in the Play gives the tour and takes a look at many aspects of the production, including: set design, scripting, wardrobing rooms, animals, and special effects.

*Free Presentations before the Play*

*David the Shepherd*

"I am the Good Shepherd." John 10:10 **7:00pm**  
(6:00pm after Labor Day)  
[DavidTheShepherd.com](http://DavidTheShepherd.com)



David the Shepherd tells stories about Jesus, the Good Shepherd. David also gives a hands-on demonstration with his shepherd sling.

*Parables from the Potter*

**7:30pm** "You are the Potter,  
(6:30pm after Labor Day) We are the Clay."  
- Isaiah 64:8

[WeAreTheClay.com](http://WeAreTheClay.com)

The potter makes a piece of pottery, showing how the Great Potter shapes, molds, and fashions us into the vessels He would want.



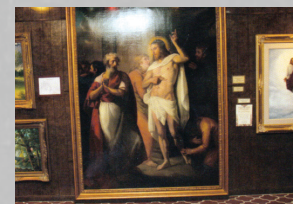
*"America's #1 Attended Outdoor Drama"*

- Institute of Outdoor Theatre of East Carolina University at Greenville, North Carolina

*The Christ of the Ozarks*  
*"And I, if I be lifted up from the earth, will draw all men unto me."*  
- John 12:32

The Christ of the Ozarks Memorial Statue stands 67 feet with an arm span of 65 feet. Since 1966, the giant figure has overlooked the Victorian village of Eureka Springs, Arkansas. Admission to the inspiring seven-story memorial statue is always free, and the Statue can be seen all year long. Donations are gratefully accepted.

*Sacred Arts Museum*



With pieces dating back to the ninth century, the Sacred Arts Center features a diverse mix of artistic mediums portraying Christ and the Christian life. In fact, there are hundreds of works of art in 64 different forms, making it one of the most expansive collections of Christ-centered art. Open every day before the Play from 11:00am - 8:00pm (after Labor Day until 7:00pm). Free to see with donations gratefully accepted.

With over 7,000 Bibles in 625 languages and dialects, along with a large collection of parchments and artifacts, the Bible Museum is one of most impressive of its kind. Among the most important artifacts include: an original 1611 King James Bible, a page of the Gutenberg Bible, a one-of-a-kind 1898 Bible signed by all of the original Gideons, and numerous others. Open every day before the Play from 9:00am-8:00pm (after Labor Day until 7:00pm), and on non-play days 9:00am-5:00pm. Free to see with donations gratefully accepted.

*Bible Museum*



*Your trip to the Ozarks is not complete until you see The Great Passion Play!*

*"The Play has become a touchstone of Christian culture."*

- Los Angeles Times

Since 1968, over 7.8 million people have seen The Great Passion Play in Eureka Springs, Arkansas. Tucked away in the picturesque Ozark Mountains, the amphitheater transports you over 2,000 years ago to witness the majesty of Jesus Christ's life, betrayal, death, and resurrection.

A cast of over 170 actors and dozens of birds and animals perform the Play on a set built into the hillside. In fact, this epic drama is staged on a massive set that is three-stories-tall and 550 feet across! Yet each of the 4,000 seats is close enough for you to clearly see and hear the "Greatest Story Ever Told."

