

IN CASE OF FREEZE PASSION PLAY MAINTENANCE

PREPARATION

Front Entrance Fountain

- Make sure space heater is on
- Make sure light is on in between standpipe and well house.

Buffet

- Turn off water to restrooms in the salt area
- Disconnect toilets and open hose valves in walls
- You must blow the lines out
- Turn on heaters in restrooms if you want to keep water on (still risky)
- 2 space heaters in back kitchen area
- Make sure kerosene torpedo heater is in working order and kerosene on hand (heater will use about 10% a day to keep at 50 degrees when temps are between -10 and 20 degrees)

Carpenter Shop in Marketplace and East Gate

- Turn faucet on drip
- Make sure heater is running in carpenter shop
- Turn off is behind Jerusalem Chapel underneath large wooden pail
- Turn off is in East Jerusalem Gate elevator shaft for East Gate upstairs as well as Holy Land Tour monument

Basement Chapel

- Drip faucet in restroom
- Put small space heater in restroom

Bethlehem Inn

- Drip faucets
- Make sure space heater is aimed into bathroom and exhaust fan/light is off (to keep heat in)
- Downstairs in electrical panel room the shower trap will freeze unless there is a light right on it or a space heater

IN CASE OF FREEZE PASSION PLAY MAINTENANCE

Main Gift Shop Restroom – Women’s

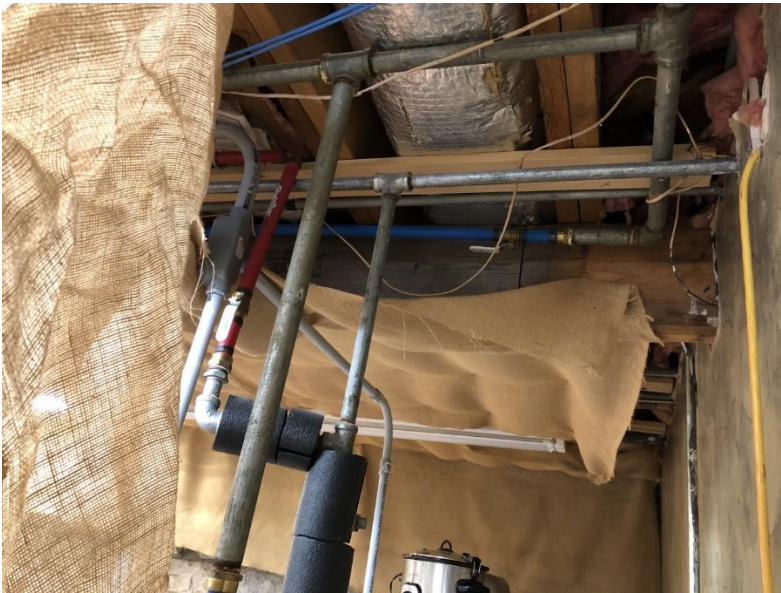
- Make sure heat is on women’s restroom
- Put space heater on in women’s room if necessary
- Make sure end faucets are dripping both hot and cold water
- Underneath in Plumber room crawl space
 1. Turn on lights
 2. Turn on space heater

Main Gift Shop Restroom – Men’s

- Heat is connected to main gift shop

Main Gift Shop – Boy’s Dorms and Showers

- Turn off hot water out at hot water heater
- Turn off cold water above hot water heater (where it transitions from pipe to pex)



- Drain will freeze in extremely cold weather. DO NOT TRY AND KEEP OPEN.
- Drain showers and sink.

Well House and Pump House

- Make sure heat lamp is on in well house
- Make sure space heater is on in pump house

IN CASE OF FREEZE PASSION PLAY MAINTENANCE

Statue Restrooms

- Make sure 2 space heaters are on in the rear area of statue restrooms
- Drip faucets on each side
- Heat lamp in the valve area behind the restrooms

Laundry Room – Lower RV Park Area

- Make sure split unit is working
- Make sure space heater with thermostat is by water heater
- Drip both hot and cold water from sink
- Shut off valve is in middle of building with short railroad tie
- Drain is at end of building on same side of valve.

RV Park Area

- People will try and keep their hoses on, but water will only last for about an hour in extreme cold.
- DO NOT LET PEOPLE TRY. Drains will also freeze.
- Frost frees must have heat tape and hoses must be heated as well.
- Watch for splitters and hoses left on bibs. Nothing must be on frost frees for them to work properly.

Maintenance Shop

- Make sure you have enough propane on hand (about a week before extreme cold expected)
- Drip both bathroom and shop faucets
- Space heater is upstairs and would benefit from small space heater
- Make sure heat is on in office and “exhaust” heat fan is on for restroom.

Set

- Make sure room below temple has heater and light on. (light switch controls power for light and wall heater)
- Make sure to drip old baby sitting room shower and sink.
- Wall heater must be working in babysitting room.
- Set room 1 and 3

Drip sinks and make sure doors to Room 1 and 3 restrooms are open.

IN CASE OF FREEZE PASSION PLAY MAINTENANCE

Make sure hoses are disconnected at frost free behind cross area

Double check pyro room temperatures if you have a lot of pyro

Administration Building

- Shower drain will freeze with very cold temps
- Drip faucet in art storage area and keep cabinet doors open
- Make sure no hose is attached outside
- Keep doors open to restrooms and cabinets as well
- Drip employee restroom faucet

Snack Shop and Bathrooms

- Already winterized

Play Concession Stand/Blanket Room

- Already Winterized

Holy Land

- Already winterized

Ticket Office and Flagpole Bathrooms

- Already winterized

First Aid Room

- Already winterized

Sacred Arts Boys Dorm

- Already winterized

IN CASE OF FREEZE **PASSION PLAY MAINTENANCE**

DAILY CHECKLIST (this takes 1-2 hours and **needs to be done in the morning and in the evening.**

1. Front Entrance Pump House
2. Buffet (keep an eye on walk in refrigerator and freezers maintain operate temps as well
3. Eastern Gate elevator shaft and Marketplace Restroom
4. Basement Jerusalem Chapel
5. Bethlehem Inn inside and basement
6. Main Gift Shop Restrooms and Basement
7. Well House and Pump House
8. Statue Restrooms
9. Laundry – Lower RV Park
10. RV Areas
11. Maintenance Shop
12. Set
13. Barn
14. Administration Building